



High Performance Protective Footwear and Clothing

CATALOG



ONGUARD Industries, L.L.C... **Known Worldwide for Safety and Protection**

ONGUARD Industries, L.L.C. prides itself for remaining ahead of the competition when it comes to safety.

Listed below are certifications attained by ONGUARD:

NFPA 1991, 2005 Edition (National Fire Protection Association): To pass the applicable boot requirements for NFPA 1991, 2005 edition, boots are independently tested to verify compliance. Boots must resist permeation for 1 hour or more against each chemical in the NFPA 1991, 2005 edition battery. The battery consists of 15 chemical liquids and 6 chemical gases. The boots must also pass a flammability resistance test.

ASTM F2413-05: For more than sixty years, the predecessor to this specification, ANSI Z41, established the performance criteria for a wide range of footwear to protect from hazards that affect the personal safety of workers. The specification contains performance requirements for footwear to protect workers' feet from the following hazards by providing: (1) impact resistance for the toe area of footwear; (2) compression resistance for the toe area of the footwear; (3) metatarsal impact protection that reduces the chance of injury to the metatarsal bones at the top of the foot; (4) conductive properties which reduce hazards that may result from static electricity buildup; and reduce the possibility or ignition of explosives and volatile chemicals; (5) electric shock resistance, to protect the wearer when accidental contact is made with live electric wires; (6) static dissipative (SD) properties to reduce hazards due to excessively low footwear resistance that may exist where SD footwear is required; (7) puncture resistance of footwear bottoms; (8) chain saw cut resistance; and (9) dielectric insulation.

Introduction



ISO 9001: In August 1993, our facility obtained ISO 9001 Certification. This serves as an additional guarantee that ONGUARD products and quality system conform to strict and globally recognized quality standards.



CAN/CSA – Z195-09 Protective Footwear (Canadian Standards Association): As used with this standard, protective footwear CSA Standard Z195 (now CAN/CSA-Z195), Protective Footwear, covers design and performance requirements, including toe protection, sole puncture protection, electric shock resistant soles, and other requirements relating to metatarsal protection and general stability of the footwear.



Steel Toe: Built-in steel toe complies with ASTM F2413-05 for impact and compression.



Puncture Resistant Steel Midsole: Meets or exceeds ASTM F2413-05 and CSA standard Z195-09 Grade 1 for puncture resistance.



Steel Shank: Provides arch protection and support.



CSA – Green Patch: Green Triangle on label signifies sole protection (steel mid-plate) and Grade 1 protective toe.



CSA – Electric Shock Resistant Footwear: Meets or exceeds the CSA requirements for electrical shock resistant footwear, as well as CSA Z195-Grade 1. Electric shock resistant footwear will withstand 18,000 volts of AC current for 1 minute, showing no leakage in excess of 1.0 milliamperes.

TABLE of CONTENTS

FOOTWEAR

Outsole Designs	1 - 2
Degradation Chart	3
Boot Requirement Chart	4
Hazmax EZ-Fit	5
Hazmax	5
Hazmax Strapper	6
Chemical Overshoe	6
Dielectric II	7
Polymax Ultra	7
Polymax Ultra (White)	7
Sureflex	8
Bluemax	8
Superpoly	9
Flex 3	9
Goliath	10
Men's Comfort Boots	10
Women's Comfort Boots	10
Polyblend	11
Standard	11
Heartland	12
White PVC	12
Steel Toe / Steel Mid-Sole	13
Monarch's (ONGUARD'S Economy Boot)	13
Buffalo	14
Slicker	14
PVC Overshoes	15
Gator	16
Hip Waders	16
Chest Waders	17
Polyurethane	18
Buckle Arctics	19
Tundra	19
Terra-Lites	20
Wolf Pac	20
Boot / Shoe Covers	21
Rubber Slicker	21
Liners	22
Replacement Insoles	22
Children's Boots	23

CLOTHING

Protective Clothing Degradation Chart	24
Protective Clothing Measuring Table	25
Steeltex	25
Chemtex	26
Sanitex	26
Visitex	27
Neotex	27
Duratex	28
Polytex	28
Webtex	29
Tuftex	29
Protex	30
Cooltex	30
Sitex	31
Economy	31
Budget	32
Thrifty	32
Poncho	32

Table of
Contents

Industrial Footwear - Outsole Designs



Ultragrip® Sipe Outsole

Available on the POLYMAX® Ultra, HAZMAX®, BLUEMAX, STEEL MID-SOLE, WADERS and DIELECTRIC. Ergonomically designed for durability and slip resistance.



Self-Cleaning Cleated Outsole

Available in the HAZMAX® STRAPPER and SLICKER. Offers great cold weather flex and traction.



Ladies Comfort Outsole

Available on the WOMEN'S COMFORT BOOT channels water out and away from the point of surface contact to provide maximum slip resistance.



Tips on preventing foot injuries in the workplace:

There is no workplace where a worker is immune to foot injury. However, the hazards differ according to the workplace and the types of tasks the worker does. The first step in developing a strategy to reduce foot problems is to identify the relevant hazards at the workplace. Such hazards should be assessed in each workplace, no matter how safe or how dangerous it may seem.



Safety-Lok Outsole

Available in WHITE PVC boots. Designed for superior traction on wet or slippery surfaces.



Men's Cleated Outsole

Available on the SUPERPOLY®, POLYBLEND, STEEL MID-SOLE, MONARCH ECONOMY, WADERS, HEARTLAND, STANDARD and WOLF PAC boots. Designed to prevent clogging on wet, slippery surfaces.



Women's Cleated Outsole

Available in women's POLYBLEND and STANDARD boots. Offers excellent traction and durability.



Exclusive Quad Cleated Outsole

Available on the RUBBER OVERSHOES. A unique sole designed for superior slip resistance and traction. Features self-cleaning lugs.



4-Way Cleated Outsole

Available in VIKING and CHEMICAL OVERBOOT. Self cleaning with maximum slip resistance.



Commando Outsole

Available on the TERRA-LITES®. When flexed, this self-cleaning, non-slip lug sole expels dirt and snow, while providing maximum cold weather slip resistance.



Ripple Outsole

Available on the TUNDRA boot. Excellent for cold weather environments.

Industrial Footwear - Outsole Designs



Cleated Ripple Outsole

Available on the BUCKLE ARCTIC and RUBBER SLICKER boots. Self-cleaning and non-slip sole expels mud and snow. Great for the toughest conditions.



Chevron Outsole°

Available on the SUPERPOLY®. A traditional sole for the red meat industry. Provides very good slip resistance.



Tunnel® Outsole

Available on the MEN'S COMFORT BOOT. Designed to reduce the strain on the heel bone. Provides superior slip resistance.



Safety-Loc Outsole

Available on the SUREFLEX boots. Designed for superior traction on wet or slippery surfaces.



Power-Lug Outsole

(2 color sole) Available on FLEX 3 boots. Unique dual compound multi-tread provides excellent slip resistance and wearer comfort.



Exclusive Polyurethane Boot Outsole

Available on Polyurethane Boots. This modified lug / sipe outsole gives great traction and durability on a variety of surfaces.



Lug Outsole

Available on the MEN'S MONARCH ECONOMY and BUFFALO boots. Aggressive tread for the toughest conditions.



Large Lug Outsole

Available on GATORS. Exclusive large lug outsole channels out debris for multi-surface traction.



Large Lug Outsole

Available on Gator S2R overshoes. Exclusive large lug outsole channels out debris for multi-surface traction.



E-Z Decon Outsole

Available on the HAZMAX E-Z FIT BOOT. Distinctive E-Z Decon Sole provides excellent slip and abrasion resistance that self-cleans with wear.



Slip Resistance Outsole

Available CHILDREN'S boots. All purpose outsole.



Power-Lug Outsole

Available on the GOLIATH boots. Multi-tread outside provides excellent slip resistance and wearer comfort.

Industrial Footwear - Degradation Chart

"HYDROCARBONS (OILS & SOLVENTS)"	POLYMAX ULTRA	SUPERPOLY	SUREFLEX	POLYBLEND	STANDARD	HEARTLAND	BLUEMAX
ASTM #1 Oil	E	E	E	E	G	G	E
ASTM #3 Oil	E	E	E	E	G	G	E
Benzene	F	P	F	P	P	P	P
Benzyl Chloride	F	P	F	P	P	P	P
Butane	E	F	F	F	P	F	F
Carbon Tetrachloride	G	F	F	F	G	F	F
Castor Oil	E	E	E	E	G	G	E
Chloroform	P	P	P	P	P	P	P
Coconut Oil	G	G	G	G	F	F	G
Cottonseed Oil	G	G	G	G	F	F	G
Cutting Oil	E	E	E	E	G	G	E
Cyclohexane	E	G	G	G	F	F	G
Gasoline (Cracked)	G	G	G	G	P	F	G
Gasoline (SR)	G	G	G	G	P	F	G
Grease (All Kinds)	E	E	E	E	G	G	E
Hexane	G	G	G-E	G	P	F	G
Hydraulic Oil	E	E	E	E	G	G	E
Isooctane	G	G	E	G	P	P	G
Kerosene (C-T)	G	G	G	G	F	F	G
Kerosene (PET)	G	E	G	E	F	F	E
Lard Oil (158 F)	E	E	E	G	F	F	G
Linseed Oil	G	G	G	G	F	F	G
Methyl Cellosolve	E	F	E	G	G	G	F
Methyl Chloride	E	F	E	F	P	P	F
Methylene Chloride	F	P	F	P	P	P	P
Mineral Oil	G	G	G	G	F	F	G
Naphtha	G	G	G	G	P	P	G
Nitrobenzene	P	P	P	P	P	P	P
Olive Oil	G	E	G	E	G	G	E
Perchloroethylene	G	F	G	F	F	F	F
Petroleum Oil	E	G	E	G	G	G	G
Petroleum Solvent	G	G	G	G	F	F	G
Pine Oil	G	E	G	E	G	G	E
Propane	E	F	E	F	P	P	F
Toluene (Toluol)	G	P	F-G	P	P	P	P
Trichloroethylene	G	F	G	F	F	F	F
Turpentine	G	G	G	G	G	G	G
Vegetable Oil	G	G	G	G	F	F	G
Xylene	G	P	G	P	P	P	P
Coal Tar Solvent	F	F	F	F	F	F	F
Beef Tallow (158 F)	E	E	E	G	F	F	G

"KETONES & ALDEHYDES"	POLYMAX ULTRA	SUPERPOLY	SUREFLEX	POLYBLEND	STANDARD	HEARTLAND	BLUEMAX
Acetone	F	P	F	P	P	P	P
Acetaldehyde	F	P	F	P	P	P	P
Benzaldehyde	P	P	P	P	P	P	P
Butyraldehyde	G	P	G	P	P	P	P
Chloroacetone	P	P	P	P	P	P	P
Formaldehyde	E	E	E	E	E	E	E
Furfural	P	P	P	P	P	P	P
Methyl Ethyl Ketone	F	P	F	P	P	P	P

ALCOHOLS

Amyl Alcohol	G	G	G	G	F	F	G
Benzyl Alcohol	G	F	G	G	G	G	F
Butyl Alcohol	G	G	G	G	F	F	G
Diacetone Alcohol	G	F	G	F	F	F	F
Diethanolamine	G	E	G	E	E	G	E
Ethylene Glycol	E	E	E	E	E	E	E
Ethyl Alcohol	E	E	E	E	G	G	E
Glycerine	E	E	E	E	E	E	E
Methyl Alcohol	E	G	E	G	G	G	G
Octyl Alcohol	G	E	G	G	F	F	E
Propyl Alcohol	G	E	G	E	G	G	E
Triethanolamine	E	E	E	E	E	E	E

ORGANIC ACIDS

Acetic Acid	G	G	G	G	G	G	G
Carbolic Acid (Phenol)	F	F	F	F	G	F	F
Citric Acid	E	E	E	E	E	E	E
Formic Acid	G	F	G	G	G	G	F
Lactic Acid	E	E	E	E	E	E	E
Malic Acid	E	G	E	G	E	G	G
Oleic Acid	G	E	G	G	F	F	E
Stearic Acid (158 F)	G	E	G	G	F	F	E
Tannic Acid	E	E	E	E	E	E	E

INORGANIC ACIDS

Carbonic Acid	E	G	E	G	G	G	G
Chlorine Water	F	G	F	G	G	G	G
Hydrobromic Acid	G	G	G	G	G	G	G
38% Hydrochloric Acid Conc.	E	E	E	E	E	E	E
48% - 52% Hydrofluoric Acid	G	G	G	E	E	E	G
Hydrogen Sulfide	G	G	G	G	G	G	G
Nitric Acid - 10%	E	E	E	E	E	E	E
Nitric Acid Conc - 70%	F	F	F	G	G	G	F
Perchloric Acid	F	F	F	G	F	F	F
Phosphoric Acid Conc - 85%	E	E	E	E	E	E	E
Sulfuric Acid - 50%	E	E	E	E	E	E	E
Sulfuric Acid Conc - 93%	P	P	P	P	P	P	P

SALTS & ALKALIES	POLYMAX ULTRA	SUPERPOLY	SUREFLEX	POLYBLEND	STANDARD	HEARTLAND	BLUEMAX
Ammonium Hydroxide	E	E	E	E	E	E	E
Ammonium Sulfate	E	E	E	E	E	E	E
Calcium Chloride	E	E	E	E	E	E	E
Calcium Hypochlorite	E	E	E	E	E	E	E
Potassium Hydroxide	G	G	G	G	G	G	G
Copper Chloride	G	E	G	G	G	G	E
Copper Sulfate	E	E	E	G	G	G	E
Ferric Chloride	E	G	E	G	G	G	G
Potassium Dichromate	E	E	E	E	G	G	E
Sodium Hydroxide	E	E	E	E	E	E	E

ORGANIC ESTERS

Amyl Acetate	F	P	F	P	F	F	P
Butyl Acetate	F	P	F	P	P	P	P
Dibutyl Phthalate	G	F	G	F	F	F	F
Ethyl Acetate	F	P	F	P	P	P	P
Ethyl formate	F	F	F	F	F	F	F
Methyl Acetate	F	P	F	P	F	P	P
Propyl Acetate	F	P	F	P	P	P	P
Tricresyl Phosphate	E	G	E	G	G	G	G
Zinc Acetate - 10%	E	E	E	E	E	E	E

MISCELLANEOUS

Acrylonitrile	F	F	F	F	F	F	F
Aniline	F	P	F	P	P	P	P
Battery Acid	E	E	E	E	E	E	E
Butter (158 F)	E	G	E	G	F	G	G
Buttermilk	E	E	E	E	E	E	E
Carbon Disulfide	G	F	G	F	F	F	F
Chlorophenol	F	F	F	F	G	F	F
Chlorobenzene	F	P	F	P	P	P	P
Chlorox	E	E	E	E	E	E	E
Cresol	F	P	F	F	G	F	P
Dichlorobenzene	F	P	F	P	P	P	P
Dibenzyl Ether	F	F	F	F	F	F	F
Ethyl Ether	G	F	G	F	F	F	F
Hydrazine	E	G	E	G	G	G	G
Hydrogen Peroxide - 30%	E	E	E	E	E	E	E
Milk	E	E	E	E	E	E	E
Monoethanolamine	E	G	E	G	G	G	G
Morpholine	P	P	P	P	P	P	P
Paint Remover	F	P	F	P	P	P	P
Soaps	E	E	E	E	E	E	E
Tetrahydrofuran	F	P	F	P	P	P	P

Key to Degradation Chart:
 E - Excellent F - Fair
 G - Good P - Poor

Actual applications and conditions may vary from our laboratory testing, and therefore the information in the above chart should be used as a guide only. Users are advised to conduct their own evaluations to determine the suitability of the footwear for each specific application.

Foot Requirement Chart

NFPA 1991, 2005 Edition Boot Requirements

NFPA – National Fire Protection Association

To pass the applicable boot requirements for NFPA 1991, 2005 edition, boots are independently tested to verify compliance. Boots must resist permeation for 1 hour or more against chemicals in the NFPA 1991, 2005 edition

battery. The battery consists of 15 chemical liquids and 6 chemical gases. The boots must also pass a flammability resistance test. Hazmax kneeboots have successfully passed all of these tests

NFPA 1991, 2005 edition CHEMICAL BATTERY

Hazmax™ Material (All tests concluded after 3 hours) [Average of 3 cells]

			NORMALIZED BREAKTHROUGH TIME (MIN) using BT criteria 0.1mg/cm ² /min				MAXIMUM PERMEATION RATE: ug/cm ² /min			
CHEMICAL	CHEMICAL CLASS	2005 Ed. Compliant	CELL #1	CELL #2	CELL #3	AVERAGE	CELL #1	CELL #2	CELL #3	AVERAGE
ACETONE	Ketone	Y	92	112	90	98	0.51	0.47	0.80	0.62
ACETONITRILE	Nitrile	Y	>180	>180	>180	>180	< 0.01	< 0.01	< 0.01	<0.01
AMMONIA (gas)	Basic Inorganic Compound	Y	>180	>180	>180	>180	< 0.01	< 0.01	< 0.01	< 0.01
1,3-BUTADIENE (gas)	Hydrocarbon Gas	Y	>180	>180	>180	>180	< 0.01	< 0.01	< 0.01	<0.01
CARBON DISULFIDE	Sulfur Organic Compound	Y	>180	>180	>180	>180	< 0.03	< 0.03	<0.03	<0.03
CHLORINE (gas)	Acidic Inorganic Gas	Y	>180	>180	>180	>180	< 0.01	< 0.01	< 0.01	< 0.01
DICHLOROMETHANE	Chlorinated Hydrocarbon	Y	>180	>180	>180	>180	< 0.07	< 0.07	< 0.07	< 0.07
DIETHYLAMINE	Amine	Y	>180	>180	>180	>180	< 0.01	< 0.01	< 0.01	<0.01
DIMETHYLFORMAMIDE	Amide	Y	>180	>180	>180	>180	< 0.01	< 0.01	0.618	<0.01
ETHYL ACETATE	Ester	Y	122	124	150	132	13.5	13.2	< 0.09	9.11
ETHYLENE OXIDE (gas)	Heterocyclic Compound	Y	>180	>180	>180	>180	< 0.01	< 0.01	<0.01	<0.01
HEXANE	Aliphatic Hydrocarbon	Y	>180	>180	>180	>180	< 0.01	< 0.01	< 0.01	<0.01
HYDROGEN CHLORIDE (gas)	Inorganic Gas & Vapor	Y	>180	>180	>180	>180	< 0.01	< 0.01	< 0.01	<0.01
METHANOL	Alcohol	Y	>180	>180	>180	>180	< 0.01	< 0.01	< 0.01	<0.01
METHYL CHLORIDE (gas)	Halogen Compound Gas	Y	>180	>180	>180	>180	< 0.04	< 0.04	< 0.04	<0.04
NITROBENZENE	Nitrogen Organic Compound	Y	>180	>180	>180	>180	< 0.01	< 0.01	< 0.01	<0.01
SODIUM HYDROXIDE	Inorganic Base	Y	>180	>180	>180	>180	< 0.01	< 0.01	< 0.01	<0.01
SULFURIC ACID	Inorganic Acid	Y	>180	>180	>180	>180	< 0.01	< 0.01	< 0.01	<0.01
TETRACHLOROETHYLENE	Chlorinated Hydrocarbon (olefin)	Y	>180	>180	>180	>180	< 0.01	< 0.01	< 0.01	<0.01
TETRAHYDROFURAN	Heterocyclic Ether	Y	>180	>180	>180	>180	< 0.01	< 0.01	< 0.01	v0.01
TOLUENE	Aromatic Hydrocarbon	Y	>180	>180	>180	>180	< 0.02	< 0.02	< 0.02	<0.02

Additional permeation data not part of NFPA 1991, 2005 ed.			NORMALIZED BREAKTHROUGH TIME (MIN) using BT criteria 0.1mg/cm ² /min				MAXIMUM PERMEATION RATE: ug/cm ² /min			
CHEMICAL	CHEMICAL CLASS		CELL #1	CELL #2	CELL #3	AVERAGE	CELL #1	CELL #2	CELL #3	AVERAGE
ACETIC ACID (GLACIAL)	Carboxylic Acid		>480	>480	>480	>480	N/A	N/A	N/A	N/A
ACRYLIC ACID	Carboxylic Acid		>480	>480	>480	>480	N/A	N/A	N/A	N/A
ACRYLONITRILE	Nitrile		160	136	136	144	34	34	36	35
ARSENIC ACID	Inorganic Acid		>480	>480	>480	>480	N/A	N/A	N/A	N/A
BROMINE (LIQUID)	Elements		444	400	420	421	1.3	99	30	43
CHROMIC ACID	Inorganic Acid		>480	>480	>480	>480	N/A	N/A	N/A	N/A
DIMETHYL HYDRAZINE	Hydrazines		240	232	288	253	2.1	2.6	1.8	2.2
EPICHLOROHYDRIN	Halogen Compound		216	196	216	209	38	37	32	74
ETHYLENE DICHLORIDE	Aliphatic Halogen Compound		188	120	144	151	48	48	45	47
HYDRAZINE	Hydrazines		>480	>480	>480	>480	.03	N/A	0.002	0.01
HYDROFLUORIC ACID (48%)	Inorganic Acid		>480	>480	>480	>480	N/A	N/A	N/A	N/A
HYDROGEN FLUORIDE (99%)	Inorganic Acid		45	30	30	35	500	500	500	500
NITRIC ACID (70%)	Inorganic Acid		>480	>480	>480	>480	N/A	N/A	N/A	N/A
NITROGEN DIOXIDE	Inorganic Gases & Vapors		450	>480	390	440	0.16	0.01	0.19	0.12
NITROGEN TETROXIDE	Inorganic Gases & Vapors		>480	270	330	360	N/A	0.1	0.12	0.07
OLEUM (30%)	Inorganic Acid		>480	>480	>480	>480	N/A	N/A	N/A	N/A
TOLUENE DIISOCYANATE (TDI)	Aromatic Isocyanate		>480	>480	>480	>480	N/A	N/A	N/A	N/A

ONGUARD Industries, L.L.C. and the Third party testing facility make no warranties or other guarantees regarding the protection afforded by particular footwear as presented. ONGUARD Industries, L.L.C. offers no warranties of merchantability or fitness for a particular use. ONGUARD Industries, L.L.C. hereby disclaims all warranties, express and implied. Actual applications and conditions may vary from our laboratory testing and, therefore, the information contained in the above listing should be used as a guide only. Users are advised to conduct their own evaluations to determine suitability of the footwear for each specific application. All tests were performed under laboratory conditions, not actual use conditions. The chemical permeation tests were performed in accordance with ASTM F-739.

Caution: Do not use this footwear for fire protection.

Use in accordance with NFPA 1500, Standard on Fire Department Occupational Safety and Health Program, and 29 CFR 1910.132.

Hazmax® EZ-Fit

Hazmat protection designed for easy donning and doffing while wearing chemical protective suit

Certified by S.E.I. to meet the requirements of NFPA 1991 Standard on Vapor-protective Ensembles for Hazardous materials Emergencies, 2005 edition.

#87015 11" Steel Toe / Steel Shank / Steel Midsole with non-slip EZ-decon Outsole (Men's sizes S-XL) Green upper/ Yellow Outsole (Shown)

#87007 11" Steel Toe / Steel Shank / Steel Midsole with non-slip EZ-decon Outsole (Men's sizes S-XL) Black upper/ Black Outsole

#87015



Features & Benefits:

- 11" boot height
- Steel toe complies with ASTM F2413-05 and CSA Z195
- One piece injection molded with no buttons or elastic bands to break, and easier decontamination
- Large kick-off lug for easy removal
- Excellent slip resistance
- Wider across the gate to allow for easy entry into the boot while wearing a chemical protective suit
- New non-slip EZ decon outsole for easier decontamination and clean-up
- Easier to don and doff when wearing a chemical protective suit
- Steel toe, steel shank, and steel midsole for complete protection
- FOUR sizes for easy ordering and stocking by the distributor and end-user

Use in situations involving dangerous chemicals, gasses or biological hazards and waste.

Men's Sizes	Boot Size
(designed to fit over a chemical suit – order normal shoe size)	
6 - 8	Small (SM)
9 - 10	Medium (MD)
11 - 12	Large (LG)
13 - 15	Extra Large (XL)

Hazmax® Kneeboot

The Finest Boots Made For Hazardous Materials Handling

#87012 16" Steel Toe/Steel Shank/Steel Midsole with Ultragrip® Sipe Outsole (Men's sizes 6-15)

Certified by S.E.I. to meet the requirements of NFPA 1991 Standard on Vapor-protective Ensembles for Hazardous materials Emergencies, 2005 edition.

Features & Benefits:

- 16" boot height
- Steel toe complies with ASTM F2413-05 and CSA Z195
- Exceeds CSA standards for Dielectric Footwear
- Steel toe, steel shank, and steel midsole for complete protection
- One-piece injection molded construction, eliminates seams
- Boots are constructed of a high viscosity and flexible PVC alloy
- Non-absorbent polyester lining for easy cleaning and quick drying
- Replaceable cushioned insoles
- Cut off bands
- Kick off lug

Use in situations involving dangerous chemicals, gasses or biological hazards and waste.

NFPA 1991, 2005 Edition

#87012



**The
World
Leader in
Personal
Protection**



Steel Toe



Puncture Resistant
Steel Mid-Sole



Steel Shank Protects
and Supports Arch

Strapper Overboot

Providing a high degree of chemical resistance



#87050 17" Overboot with Self-Cleaning Cleated Outsole (Men's sizes 7-15)

Features & Benefits:

- 17" Over-the-boot protection – fits over most shoes and boots
- One-piece injection molded construction, eliminates seams
- Boots are constructed of a high viscosity and flexible PVC alloy
- Non-absorbent polyester lining for easy cleaning and quick drying
- Adjustable polyester strap

Excellent for use in emergency response Hazmat environments and site remediation.

Chemical Overshoe

Providing a high degree of chemical resistance

#87025 10" Overshoe with 4-way Cleated Outsole (Men's sizes SM-2XL)

Features & Benefits:

- 10" Over-the-boot protection – fits over most shoes and boots
- 4-way cleated sole design for a self-cleaning, slip resistant sole
- One-piece injection molded construction, eliminates seams
- Overboots are constructed to provide optimal protection
- Special fold line with non-corrosive snap for snug fit
- Kick off lug



Excellent for use in emergency response Hazmat environments and site remediation.

Men's Boot Sizes	Overboot Size
6 - 7	Small (SM)
8 - 9	Medium (MD)
10 - 11	Large (LG)
12 - 13	Extra Large (XL)
14 - 15	Extra, Extra Large (2XL)

6

**Order
Toll Free
1-800-
365-2282**



Dielectric II

Extensive Range of Protection For The Utilities Industry

#88722



#88722 16" Steel Toe Kneeboot with Ultragrip® Sipe Outsole
(Men's sizes 6-15)

Features & Benefits:

Electric Shock Resistant footwear is tested to meet or exceed the ASTM F-2413-05 EH. Electric Shock Resistant footwear will withstand 14,000 volts of AC current for 1 minute, showing no leakage in excess of 3.0 milliamperes.

- Injected molded seamless construction
- Steel toe complies with ASTM F2413-05
- Cut off bands and kick off lug
- Replaceable cushion insoles

Excellent for use in utilities, municipalities, construction and engineers.

7

Polymax® Ultra

Specifically Designed To Provide A Very High Degree of Chemical Resistance

#84075 16" Plain Toe Kneeboot with Ultragrip® Sipe Outsole
(Men's sizes 6-15)

#84076 16" Steel Toe Kneeboot with Ultragrip® Sipe Outsole
(Men's sizes 6-15) (Shown)

#81076 16" White Steel Toe Kneeboot with Ultragrip® Sipe Outsole
(Men's sizes 6-15) (Shown)

#81076



All are excellent for use in slaughterhouses, meat processing, canneries, breweries, dairies, oil rigs and chemical plants.

#84076



Features & Benefits:

- Injected molded seamless construction
- Steel toe style complies with ASTM F2413-05
- Hardened steel ladder shank
- Steel safety toe in selected styles
- Extra outside ankle protection
- Heel and toe bumpers
- Cut off band for height adjustment
- Kick off lug for easy on and off
- Abrasion resistant outside for extended wear



**The
World
Leader in
Personal
Protection**



Steel Toe



Puncture Resistant
Steel Mid-Sole



Steel Shank Protects
and Supports Arch

SureFlex

Designed With High Chemical and Abrasion Resistance Properties

#84982



#87982



#84981 – Process-Pro Plain Toe Kneeboot with Safety-Loc Outsole (Men's sizes 5 – 15) Brown/Cream

#84982 – Process-Pro Steel Toe Kneeboot with Safety-Loc Outsole (Men's sizes 5 – 15) Brown/Cream

#87983 Plain Toe Kneeboot with Safety-Loc Outsole (Men's sizes 5-15) Gray/Orange.

#87982 Steel Toe with Safety-Loc Outsole, (Men's sizes 5-15) Gray/Orange.

#87980 6" Plain Toe Workshoe with Safety-Loc Outsole (Men's sizes 6-13) Gray/Orange.

#87981 6" Steel Toe with Safety-Loc Outsole, (Men's sizes 6-13) Gray/Orange.

#87981



Features & Benefits:

- 100% waterproof, high molecular weight, PVC/Nitrile sole and soft flexible, high performance PVC compound upper
- Steel toe complies with ASTM F2413-05
- Resists animal fats, petroleum, oils, grease and chemicals
- Orange slip-resistant Safety-Loc™ outsole
- Removable insole for added comfort
- Steel shank for firm arch support
- Kick off lugs for easy removal

Excellent for use in chemicals, farming and food processing.

8

Bluemax

Specially formulated for poultry and seafood processing

#89102



#89101 16" Plain Toe Kneeboot with Ultragrip® Sipe Outsole (Men's sizes 6-15)

#89102 16" Steel Toe Kneeboot with Ultragrip® Sipe Outsole (Men's sizes 6-15) (Shown)

Features & Benefits:

- Formulated from technologically advanced polymers
- Steel toe style complies with ASTM F2413-05
- Injected molded seamless construction
- Built-in steel shank
- Replaceable cushion insoles
- Heel and toe bumpers
- Extra outside ankle protection
- Cut off band for height adjustment
- Kick off lug for easy on and off

Excellent for use in poultry, seafood processing, food processing and canneries.

**Order
Toll Free
1-800-
365-2282**



Made in America

Superpoly®

Designed For Use Where High Chemical Resistance Is Required

#85302



#85301 16" Plain Toe Kneeboot with Men's Cleated Outsole (Men's sizes 5-13)

#85302 16" Steel Toe Kneeboot with Men's Cleated Outsole (Men's sizes 5-13) (Shown)

#85324 16" Steel Toe Kneeboot with Chevron Outsole (Men's sizes 5-13) (Shown)

#55338 14" Steel Toe Kneeboot with Chevron Outsole (Women's sizes 5-10) (Shown)

#85324



Features & Benefits:

- Injected molded seamless construction
- Steel toe style complies with ASTM F2413-05
- Reinforced steel shank for added safety and comfort (Men's sizes only)
- Steel safety toe in selected styles
- Scientifically formulated urethane PVC compound
- Replaceable cushion insoles • Heel and toe bumpers
- Cut off band for height adjustment
- Kick off lug for easy on and off

#55338



All are excellent for use in slaughter houses, red meat processing, canneries, breweries, dairies, oil rigs and chemical plants.

Flex 3

Polyblend with Nitrile For Superior Resistance To Fats, Oils and Chemicals

#89904 Plain Toe Kneeboot with Power-Lug Outsole (Men's sizes 5-15)

#89908 Steel Toe Kneeboot with Power-Lug Outsole (Men's sizes 5-15) (Shown)

Features & Benefits:

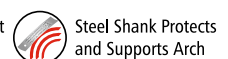
- 100% waterproof, Polyblend PVC compound for superior resistance to fats, oils and chemicals
- Steel toe style complies with ASTM F2413-05
- Power-Lug outsole provides superior wear resistance, slip-resistance and cushioning for indoor traction
- Removable air cushion insole for added comfort
- Steel shank for firm arch support
- Kick off lugs for easy removal

Use in oil rigs, refineries, food processing, general industrial areas, lawn care, dairies, breweries and utilities.

#89908



The
World
Leader in
Personal
Protection



Goliath

Providing Moderate Chemical Protection

#89682



#89680 Plain Toe Kneeboot with Power-Lug Outsole (Men's sizes 5-15)

#89682 Steel Toe Kneeboot with Power-Lug Outsole (Men's sizes 5-15)

Features & Benefits:

- 100% waterproof, Polyblend compound
- Steel toe style complies with ASTM F2413-05
- Superior resistance to animal fats (especially poultry), acids oils, greases and chemicals
- High abrasive wear
- Removable insole
- Steel shank for firm arch support

Excellent for use in food processing, chemical plants, lawn care, canneries, poultry processing, fish processing, breweries and mining.

Men's Comfort Boots

Increased Comfort Features For All Day Wear

#82002



#82002 15" "Neomax" Grey Steel Toe PVC Boot with Tunnel Outsole (Men's sizes 6-16)

#82224 15" Polyblend Hunter Green Steel Toe Boot with Tunnel Outsole (Men's sizes 6-16)

#82006 15" Polyblend Black Steel Toe Boot with Tunnel Outsole (Men's sizes 6-16)

Features & Benefits:

- Extra comfort
- Steel toe complies with ASTM F2413-05
- Excellent slip resistance
- Abrasion resistant outsole
- Extra wide shaft
- Snug ankle fit

All excellent for use in a variety of applications

#82224



#82006



Women's Comfort Boots

The Ultimate In Comfort and Style For Women In Various Applications

#52700



#52700 10" Steel Toe Boot (Women's sizes 4-10) (Shown)

#52800 10" Plain Toe Boot (Women's sizes 4-10)

Features & Benefits:

- Polyblend compound
- Extra comfort
- Steel toe style complies with ASTM F2413-05
- Non-corrosive snaps
- Unique wrap around style easily adjusts to fit all calf sizes
- Removable comfort insole

All excellent for use in a variety of applications

**Order
Toll Free
1-800-
365-2282**



Made in America

Polyblend

Designed for use where moderate chemical resistance is required

#56132



#86101 16" Plain Toe Kneeboot with Men's Cleated Outsole (Men's sizes 4-13)

#86102 16" Steel Toe Kneeboot with Men's Cleated Outsole (Men's sizes 4-13) (Shown)

#86103 6" Plain Toe Workshoe with Men's Cleated Outsole (Men's sizes 6-13)

#86104 6" Steel Toe Workshoe with Men's Cleated Outsole (Men's sizes 6-13) (Shown)

#56131 14" Plain Toe Kneeboot with Women's Cleated Outsole (Women's sizes 5-11)

#56132 14" Steel Toe Kneeboot with Women's Cleated Outsole (Women's sizes 5-11) (Shown)



#86102



#86104



Features & Benefits:

- Injected molded seamless construction
- Steel toe style complies with ASTM F2413-05
- Reinforced steel shank for added safety and comfort (men's sizes only)
- Steel safety toe in selected styles • Replaceable cushion insoles
- Scientifically formulated polyurethane and PVC
- Non-slip, self cleaning soles
- Cut off band for height adjustment

All are excellent for use in: lawn care, poultry and food processing, mining, breweries, oil rigs, oil refineries, and chemical plants.

II

Standard

Durable and comfortable foot protection where mild chemical resistance is required

#56234



#86311 Plain Toe Kneeboot with Men's Cleated Outsole (Men's sizes 5-13)

#86312 Steel Toe Kneeboot with Men's Cleated Outsole (Men's sizes 5-13) (Shown)

#86304 6" Steel Toe Workshoe with Men's Cleated Outsole (Men's sizes 6-13) (Shown)

#56233 14" Plain Toe Kneeboot with Women's Cleated Outsole (Women's sizes 5-11)

#56234 14" Steel Toe Kneeboot with Women's Cleated Outsole (Women's sizes 5-11) (Shown)



#86312



Features & Benefits:

- Mild chemical resistance
- Steel toe style complies with ASTM F2413-05
- Cut-off bands for height adjustment
- Pull-up and kick-off lugs for easy on and off



#86304



All are excellent for use in: general maintenance, construction, and utilities.



**The
World
Leader in
Personal
Protection**



Steel Toe



Puncture Resistant
Steel Mid-Sole



Steel Shank Protects
and Supports Arch

Heartland

Comfortable foot protection providing superior protection for agricultural application

#84452



#84451 16" Plain Toe Kneeboot with Men's Cleated Outsole (Men's sizes 6-13)

#84452 16" Steel Toe Kneeboot with Men's Cleated Outsole (Men's sizes 6-13) (Shown)

Features & Benefits:

- Scientifically formulated Nitrile/PVC compound
- Steel toe style complies with ASTM F2413-05
- Reinforced steel shank for added safety and comfort (men's sizes only)
- Replaceable cushion insoles
- Cut-off bands for height adjustment
- Pull-up and kick-off lugs for easy on and off

All are excellent for use in: farms, agriculture, dairies, barnyard waste, and power washing.

White PVC

Designed for use where mild chemical resistance is required. Designed to help processing plants comply with HACCP guidelines

#81012



#81011 16" Plain Toe Kneeboot with Safety-Lok Outsole (Men's sizes 6-13)

#81012 16" Steel Toe Kneeboot with Safety-Lok Outsole (Men's sizes 6-13) (Shown)

#51033 14" Women's Plain Toe Kneeboot with Safety-Lok Outsole (Women's sizes 5-10)

#51034 14" Women's Steel Toe Kneeboot with Safety-Lok Outsole (Women's sizes 5-10) (Shown)

Features & Benefits:

- Injected molded seamless construction
- Steel toe style complies with ASTM F2413-05
- Steel shank for added safety and comfort (Men's sizes only)
- Steel safety toe in selected styles
- Safety-Lok sole
- Replaceable cushion insoles
- Pull-up and kick off lugs for easy on and off
- Cut off band for height adjustment

#51034



12

All are excellent for use in: commercial fishing, shrimping, and food processing

Lady Monarch

"The softer side of tough" – exclusively for Women. Provides a mild degree of chemical protection.

#53605 14" Women's Plain Toe Kneeboot with Lug Outsole

#53606 14" Women's Steel Toe Kneeboot with Lug Outsole

Features & Benefits:

- Injected molded seamless construction
- Steel toe style complies with ASTM F2413-05
- Reinforced shank
- Replaceable cushion insoles
- Pull-up and kick off lugs for easy on and off
- Replaceable cushion insoles
- Cut off band for height adjustment
- 100% waterproof

#53606



Excellent for use in: General Industry, Agriculture, Aquaculture, and Food Processing

**Order
Toll Free
1-800-
365-2282**



Steel Toe/Steel Midsole

Excellent underfoot protection. Designed to provide exceptional puncture resistance

#86622



#86802 16" Polyblend Steel Toe & Midsole Kneeboot with Ultragrip® Outsole
(Men's sizes 6-15)

#86622 16" Economy Steel Toe & Midsole Kneeboot with Cleated Outsole
(Men's sizes 6-13)

Features & Benefits:

- Injected molded seamless construction
- Steel toe complies with ASTM F2413-05 and CSA Z195
- Full steel midsole
- Replaceable cushion insoles
- Pull-ups and kick off lugs for easy on and off
- Cut off band for height adjustment

All are excellent for use in: orchards, vegetable fields, citrus groves, and agriculture.

#86802



13

Monarch ONGUARD'S Economy Boot

Durable yet economic foot protection designed for uses where chemical resistance is not a factor



#86604



#86604 6" Steel Toe Workshoe with Cleated Outsole (Men's sizes 6-13) (Shown)

#86605 16" Plain Toe Kneeboot with Cleated Outsole (Men's sizes 4-13)

#86606 16" Steel Toe Kneeboot with Cleated Outsole (Men's sizes 4-13) (Shown)

#87527 14" Women's Steel Toe Boot with Lug Outsole, ST (Not shown)
(Women's sizes 5-11)

Features & Benefits:

- Injected molded seamless construction
- Steel toe style complies with ASTM F2413-05
- Reinforced shank
- Replaceable cushion insoles
- Pull-up and kick off lugs for easy on and off
- Cut off band for height adjustment
- Heavy duty laces in selected styles
- 100% waterproof
- Manufactured using a minimum of 88% pre-consumer recycled materials

All are excellent for use in: orchards, vegetable fields, citrus groves, and agriculture.

#86606



**The
World
Leader in
Personal
Protection**



Steel Toe



Puncture Resistant
Steel Mid-Sole



Steel Shank Protects
and Supports Arch

Buffalo

Economy grade boot for waterproof protection

#87801



#87401 Plain Toe Kneeboot with Lug Outsole, PT (Men's sizes 3-14)

#87801 Steel Toe Kneeboot with Lug Outsole, ST (Men's sizes 3-14) (Shown)

Features & Benefits:

- 100% waterproof, black PVC compound
- Steel toe style complies with ASTM F2413-05
- Self-cleaning lug outsole for traction in wet, muddy conditions
- V-bar molded shank for complete arch support
- Kick-off lugs for easy removal

All are excellent for use in: construction, farming, agriculture and aquaculture.

Slicker

The most durable overboot protection available

#86050



#86050 17" Black Overboot with Strap with Self-Cleaning Cleated Outsole (Men's sizes 7-15)

#88050 17" Yellow Overboot with Strap with Self-Cleaning Cleated Outsole (Men's sizes 7-15)

#88060 17" "All American" Yellow Overboot with Self-Cleaning Cleated Outsole (Men's sizes 7-15)

Features & Benefits:

- Injected molded seamless construction
- PVC / FLEX-O-THANE compound
- Excellent cold weather flexibility
- Non-absorbent polyester liner for easy cleaning and quick drying
- Non-conductive, adjustable polyester strap with plastic buckle and snap for better fit
- Fits over most work shoes and boots
- Self-cleaning, cleated sole

#88050



#88060



All are excellent for use in: construction, concrete work, utilities and food processing

14

**Order
Toll Free
1-800-
365-2282**



PVC Overshoes

Premium overshoe and overboot protection. Heavy FLEX-O-THANE PVC construction for added durability



#88020

#81020 10" White Overshoe with 4-Way Cleated Outsole (Men's sizes XS-2XL)

#86010 4" Black Overshoe with 4-Way Cleated Outsole (Men's sizes XS-2XL)

#86020 10" Black Overshoe with 4-Way Cleated Outsole (Men's sizes XS-2XL)

#86030 17" Black Overshoe with 4-Way Cleated Outsole (Men's sizes XS-2XL)

#88010 4" Yellow Overshoe with 4-Way Cleated Outsole (Men's sizes XS-2XL)

#88020 10" Yellow Overshoe with 4-Way Cleated Outsole (Men's sizes XS-2XL)



#86010



#86020

Features & Benefits:

- Injected molded seamless construction
- Excellent cold weather flexibility
- Self-cleaning, slip resistance outsole
- Kick off lug for easy on and off
- Fits over most work shoes and boots



#88010



#81020



#86030

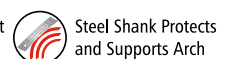
Men's Boot Size	Overboot Size
4 – 5	Extra Small (XS)
6 – 7	Small (SM)
8 – 9	Medium (MD)
10 – 11	Large (LG)
12 – 13	Extra Large (XL)
14 – 15	Extra, Extra Large (2XL)

All are excellent for use in: construction, farming, utilities and food processing

15



**The
World
Leader in
Personal
Protection**



Gator

Over the shoe protection for a wide range of work applications



#89802

#89810 5" with Lug Outsole (Men's sizes S-2XL)

#89802 12" with Lug Outsole (Men's sizes S-2XL)

#89820 5" S²R with RED Lug Outsole (Men's sizes S-2XL)



#89820

Features & Benefits:

- 100% waterproof, durable, injection molded black PVC overshoe
- Closure buttons are molded onto the boots for added strength
- Self-cleaning Large lug outsole for added traction in most conditions
- Elastic closure loops with stitched tabs can be easily secured with gloves
- Molded extra large kick-off lugs
- Size-for-size fit over work boots

All are excellent for use in: farming and utilities.



#89810

Men's Boot Size	Overboot Size
6 - 8	Small (S)
9 - 10	Medium (M)
11 - 12	Large (L)
13 - 14	X-Large (XL)
15 - 16	2X-Large (2XL)

Storm King/Hip Wader

Superior, waterproof protection to the hips

#86049



#86049 Steel Toe Storm King with Cleated Outsole (Men's sizes 6-13) (Shown)

#86055 Plain Toe Hip Wader with Cleated Outsole (Men's sizes 6-13)

#86056 Steel Toe Hip Wader with Cleated Outsole (Men's sizes 6-13) (Shown)

#86856 Steel Toe & Steel Midsole Hip Wader with Ultragrip® Sipe Outsole (Men's sizes 6-13) (Shown)



#86856



Features & Benefits:

- Injected molded seamless boot construction
- Steel toe style complies with ASTM F2413-05
- Steel safety toe in selected styles
- Steel midsole in selected styles
- Excellent cold weather flexibility
- Lightweight/durable PVC upper with polyester backing
- Adjustable polyester nylon strap
- Can be folded or rolled without cracking
- Resist oil, grease, gasoline, saltwater and ozone
- Non-absorbent lining
- Replaceable cushion insoles

#86056



All are excellent for use in: utilities, municipalities, aquaculture and commercial fishing

	WADER MEASUREMENTS	
	Inseam	Outseam
86049	27"	27"
86055	32"	35"
86056	32"	35"
86856	32"	35"
From heel to top of wader		

Order
Toll Free
1-800-
365-2282



16

Chest Wader

Superior, waterproof protection to the chest

#86066 Plain Toe with Cleated Outsole (Men's sizes 6-13)

#86067 Steel Toe with Cleated Outsole (Men's sizes 6-13) (Shown)

#86867 Steel Toe and Steel Midsole with Ultragrip® Sipe Outsole (Men's sizes 6-13) (Shown)

Features & Benefits:

- Injected molded seamless boot construction
- Steel toe style complies with ASTM F2413-05
- Safety steel toe in selected styles
- Steel midsole in selected styles
- Excellent cold weather flexibility
- Durable, heavy duty PVC upper with polyester backing
- Adjustable polyester nylon strap
- Can be folded or rolled without cracking
- Resist oil, grease, gasoline, saltwater and ozone
- Top drawstring closure of snug fit
- Non-corrosive, reinforced suspender buttons
- Built-in belt loops with adjustable belt
- Non-absorbent lining
- Replaceable cushion insoles

#86067



#86867



WADER MEASUREMENTS:

All chest waders measure 56.6" in height (from heel to top of wader).

All are excellent for use in: utilities, municipalities, aquaculture and commercial fishing



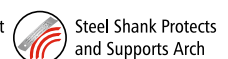
**The
World
Leader in
Personal
Protection**



Steel Toe



Puncture Resistant
Steel Mid-Sole



Steel Shank Protects
and Supports Arch

Polyurethane Boot

Ultra lightweight boots with excellent abrasion protection.

#88121 15" Polyurethane Steel Toe Boot
(Men's sizes 5 - 15)

Features & Benefits:

- Steel Toe is ASTM F2413-05 compliant
- Lightweight and abrasion resistant
- Polyurethane upper and outsole
- Resists a wide range of chemicals, fats, and acids (especially in food processing)
- Reduced weight decreases foot fatigue for increased productivity
- Abrasion resistant sole provides up to three times longer wear than traditional PVC footwear



#88121



Excellent for use in food processing and general industry.



Tips for designing a PPE (Personal Protective Equipment) program

A PPE program must be comprehensive. It requires commitment and active participation at the planning, development, and implementation stages from all levels: senior management, supervisors, and workers. A good PPE program consists of these essential elements.

- Workplace survey
- Selection of appropriate controls
- Selection of appropriate PPE
- Fitting
- Training
- Management support
- Maintenance
- Auditing of the program

ONGUARD sales professionals can help you with designing a PPE program by identifying the necessary protective footwear and clothing elements.

18

**Order
Toll Free
1-800-
365-2282**



Buckle Arctics

Premium ozone resistant overboots

#86063



#86063 11" 4-Buckle Overboot with Cleated Ripple Outsole
(Men's sizes 6-15)

#86065 14" 5-Buckle Overboot with Cleated Ripple Outsole
(Men's sizes 6-15)

Features & Benefits:

- Built-up rubber construction
- Premium rubber
- Non-corrosive buckles
- Heavy duty stretch-net cotton lining
- Self-draining gusset
- Fits over most work shoes and boots
- Self-cleaning, cleated soles
- Order by shoe size

#86065



All are excellent for use in: construction, utilities, roadwork, and foul weather

19

Tundra

General purpose cold weather

#83045 11" Plain Toe Boot with Ripple Outsole (Men's sizes 6-13)

Features & Benefits:

- Built-up construction
- Synthetic leather and nylon upper
- Premium, ozone resistant rubber lower and sole
- Bellows tongue for easy entry and exit
- Non-corrosive brass eyelets and strong taslon laces
- Reinforced, leather pull-on strap and kick-off lug for easy on and off
- Lightweight and removable Thinsulate® 3M liner for warmth and comfort
- Protection to -35° F

#83045



**The
World
Leader in
Personal
Protection**

Excellent for use in: freezer lockers and cold storage units, cold weather industrial environments, and cold weather sports



Steel Toe



Puncture Resistant
Steel Mid-Sole



Steel Shank Protects
and Supports Arch

Terra-Lites

Ideal for use in frigid conditions

#86391 10" Plain Toe Boot with Commando Outsole (Men's sizes 7-13) (Shown)

#86392 10" Therma Toe® Boot with Commando Outsole (Men's sizes 7-13)

#86391



Features & Benefits:

- Direct injection molded construction
- Genuine leather, water-repellent upper, treated with Dow Corning Sylflex® protectors
- Ultra-light, dual density polyurethane bottom
- Self-cleaning, commando soles
- Non-corrosive, brass eyelets and strong taslon laces
- Reinforced, leather pull-on strap and kick-off lug for easy on and off
- Lightweight and removable Thermashield® 3-ply liner with fleece collar for optimum warmth
- Therma Toe® protective toe cap available in selected styles
- Protection to -50° F

All are excellent for use in: freezer lockers and cold storage units, cold weather industrial environments, ice fishing, winter hunting, and snowmobiling

Wolf Pac

100% Waterproof protection for cold weather industries

#86396 10" Plain Toe Boot with Cleated Outsole (Men's sizes 6-14)

#86397 10" Steel Toe Boot with Cleated Outsole (Men's sizes 6-14) (Shown)

Features & Benefits:

- 100% waterproof, Polyblend compound
- Steel toe style complies with ASTM F2413-05
- PVC injection molded construction
- Bellows tongue for easy entry and exit
- Roomy toe vault prevents pressure on toes and maintains healthy circulation in cold temperatures
- Heavy duty, 5-lbs. Wool felt liner with reinforced heel



#86397

All are excellent for use in: freezer lockers and cold storage units, cold weather industrial environments, cold weather sports, food processing, poultry processing and fish processing

20

**Order
Toll Free
1-800-
365-2282**

ONGUARD
INDUSTRIES

Boot / Shoe Covers

An extra layer of protection for various applications

#97590



#97590 15" PVC Boot/Shoe Cover (Men's sizes M-XL)

Features & Benefits:

- 100% waterproof
- Heat welded protection
- .20mm PVC upper
- Hard, embossed .50mm PVC sole
- Elastic top for a secure and snug fit

#97590

Men's Boot Size	Overboot Size
6 – 8	Medium (MD)
9 – 11	Large (LG)
12 – 14	Extra Large (XL)

#97591



#97591 12" Latex "Hazmat" Boot Cover (Men's sizes LG-2XL)

Features & Benefits:

- 100% waterproof
- Dipped construction
- .60mm latex rubber
- Ribbed and textured sole

#97591

Men's Boot Size	Overboot Size
7 – 9	Large (LG)
10 – 12	Extra Large (XL)
13 – 16	Extra Extra Large (2XL)

All are excellent for use in: spill clean-ups, municipalities, and utilities

Rubber Slicker

The most economical overboot protection available

#88070



#88070 17" with Cleated Ripple Outsole (Men's sizes 7-18)

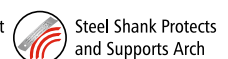
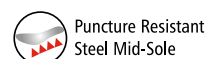
Features & Benefits:

- Built-up rubber construction
- 100% waterproof while offering a comfortable fit
- Moderate chemical resistance
- Non-absorbent polyester liner to keep feet dry and warm
- Non-conductive, adjustable polyester strap with plastic buckle and snap for better fit
- Fits over most work boots
- Self-cleaning, cleated ripple soles
- Order by shoe size

Excellent for use in: construction, concrete work, and utilities



**The
World
Leader in
Personal
Protection**



Liners

Provide additional warmth and comfort



#94066



#91077 10" Thermashield® Liner (Men's sizes 7-13) Fits: Terra-Lites®

#94055 11" Thinsulate® 3M Liner (Men's sizes 6-15) Fits: Tundra

#94066 16" Borg Liner (Men's sizes XS-XL) Fits: All PVC Boots (Shown)

#99021 5-lbs. Wool Felt Liner (Men's sizes 7-14) Fits: Wolf Pac

BORG LINER SIZING:

Men's Boot Size	Liner Size
4-5	Extra Small (XS)
6-7	Small (SM)
8-9	Medium (MD)
10-11	Large (LG)
12-13	Extra Large (XL)

Replacement Insoles

Provide additional cushion protection



#91080
#91090

#91019 Men's Standard Cushion
(Men's sizes 4-13)

#91080 Softstep 2 (Two Layer Formed Insole)
(Men's sizes 4-16)

#91090 Softstep 3 (Three Layer Formed Insole)
(Men's sizes 5-17)

#91099 SoftStep Xtreme (Arch supporting
Insole) Men's sizes 5-15)



#91099



#91019

22

Order
Toll Free
1-800-
365-2282



Children's Boots

100% waterproof PVC, protection for children



#07620



#07710
#07940

#07620 Scamp Youth (Yellow/Black)

#07650 Scamp Youth (Navy/Teal)

#07670 Scooter Youth (Black)

#07700 Scamp Youth (Red/Black)

#07710 Scamp Youth (Black/Red)

#07780 Scamp Youth (Rose/Purple)

#07910 Scooter Junior (Black)

#07940 Scooter Junior (Black/Red)

#07950 Scooter Junior (Navy/Teal)

Features & Benefits:

- Slip-resistant outsole
- Removable insole
- Polyester Liner

23



#07650
#07950

Youth

6-4 (whole sizes only)

Junior

5-9 (whole sizes only)

Scamp

Yellow/Black

Rose/Purple

Navy/Teal

Red/Black

Black/Red

Scooter

Black

Black/Red

Navy/Teal



#07700



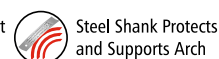
#07780



#07670
#07910



The
World
Leader in
Personal
Protection



Protective Clothing - Degradation Chart

HYDROCARBONS (OILS & SOLVENTS)	CHEMTEx	NEOTEx	PROTEX
ASTM #1 Oil	E	G	G
ASTM #3 Oil	E	F	G
Benzene	G	G	G
Benzyl Chloride	F	F	F
Butane	E	G	G
Carbon Tetrachloride	F	F	F
Castor Oil	G	E	G
Chloroform	G	G	G
Coconut Oil	G	G	G
Cottonseed Oil	G	G	G
Cutting Oil	G	G	G
Cyclohexane	F	G	F
Gasoline (Cracked)	G	G	G
Gasoline (SR)	G	G	G
Grease (All Kinds)	E	E	E
Hexane	G	E	G
Hydraulic Oil	G	E	G
Isooctane	G	E	G
Kerosene (C-T)	G	G	G
Kerosene (PET)	G	G	G
Lard Oil (158 F)	G	G	G
Linseed Oil	G	G	G
Methyl Cellosolve	G	E	G
Methyl Chloride	P	G	P
Methylene Chloride	P	G	P
Mineral Oil	G	G	G
Naphtha	G	F	G
Nitrobenzene	P	G	P
Olive Oil	G	G	G
Perchloroethylene	G	E	G
Petroleum Oil	G	G	G
Petroleum Solvent	G	G	G
Pine Oil	G	G	G
Propane	E	G	E
Toluene (Toluol)	G	E	G
Trichloroethylene	F	G	G
Turpentine	G	G	G
Vegetable Oil	G	G	G
Xylene	G	G	G
Coal Tar Solvent	G	G	G
Beef Tallow (158 F)	G	G	G

KETONES AND ALDEHYDES	CHEMTEx	NEOTEx	PROTEX
Acetone	G	E	G
Acetaldehyde	G	G	G
Benzaldehyde	P	F	P
Butyraldehyde	F	G	G
Chloroacetone	F	G	F
Formaldehyde	E	E	E
Furfural	G	E	G
Methyl Ethyl Ketone	P	G	P
ALCOHOLS			
Amyl Alcohol	G	E	G
Benzyl Alcohol	G	E	G
Butyl Alcohol	P	G	G
Diacetone Alcohol	G	E	G
Diethanolamine	E	E	E
Ethylene Glycol	G	E	E
Ethyl Alcohol	G	E	G
Glycerine	E	E	E
Methyl Alcohol	G	E	G
Octyl Alcohol	G	G	G
Propyl Alcohol	G	G	G
Triethanolamine	E	E	E
ORGANIC ACIDS			
Acetic Acid	G	E	G
Carbolic Acid (Phenol)	E	G	G
Citric Acid	E	E	E
Formic Acid	P	G	F
Lactic Acid	G	E	E
Malic Acid	G	F	G
Oleic Acid	G	G	G
Stearic Acid (158 F)	G	G	G
Tannic Acid	E	E	E
INORGANIC ACIDS			
Carbonic Acid	G	G	E
Chlorine Water	G	G	G
Hydrobromic Acid	F	G	F
-38% Hydrochloric Acid Conc	F	G	F
48% - 52% Hydrofluoric Acid	G	P	G
Hydrogen Sulfide	G	G	G
Nitric Acid - 10%	G	G	E
Nitric Acid Conc - 70%	G	P	G
Perchloric Acid	F	F	F
Phosphoric Acid Conc - 85%	E	G	G
Sulfuric Acid - 50%	G	E	G
Sulfuric Acid Conc- 93%	P	F	F

SALTS & ALKALIES	CHEMTEx	NEOTEx	PROTEX
Ammonium Hydroxide	E	E	E
Ammonium Sulfate	G	E	G
Calcium Chloride	G	E	E
Calcium Hypochlorite	E	E	E
Potassium Hydroxide	G	E	G
Copper Chloride	E	E	E
Copper Sulfate	E	E	E
Ferric Chloride	E	E	E
Potassium Dichromate	G	E	G
Sodium Hydroxide	E	E	G
ORGANIC ESTERS			
Amyl Acetate	F	E	F
Butyl Acetate	F	E	F
Dibutyl Phthalate	P	F	P
Ethyl Acetate	F	G	F
Ethyl formate	F	E	G
Methyl Acetate	F	G	G
Propyl Acetate	F	G	F
Tricresyl Phosphate	F	F	F
Zinc Acetate - 10%	E	E	E
MISCELLANEOUS			
Acrylonitrile	F	G	F
Aniline	G	G	G
Battery Acid	G	E	E
Butter (158 F)	G	G	G
Buttermilk	E	G	G
Carbon Disulfide	F	G	G
Chlorophenol	F	G	F
Chlorobenzene	F	P	F
Chlorox	E	E	E
Cresol	G	G	G
Dichlorobenzene	G	G	G
Dibenzyl Ether	F	G	F
Ethyl Ether	F	G	F
Hydrazine	G	F	G
Hydrogen Peroxide - 30%	E	G	E
Milk	E	E	E
Monoethanolamine	G	F	G
Morpholine	P	G	P
Paint Remover	G	G	G
Soaps	E	E	E
Tetrahydrofuran	P	G	P

Actual applications and conditions may vary from our laboratory testing, and therefore the information contained in the above chart should be used as a guide only. Users are advised to conduct their own evaluations to determine the suitability of the protective clothing for each specific application. ONGUARD INDUSTRIES MAKES NO WARRANTIES REGARDING THE PROTECTION AFFORDED BY PARTICULAR PROTECTIVE CLOTHING AS PRESENTED. ONGUARD OFFERS NO WARRANTIES OF MERCHANTABILITY OF FITNESS FOR A PARTICULAR USE. ONGUARD INDUSTRIES HEREBY DISCLAIMS ALL WARRANTIES EXPRESSED AND IMPLIED.

E. Excellent
F. Fair
G. Good
P. Poor

Order
Toll Free
1-800-
365-2282



Protective Clothing - Product Measuring Table

Product Measurement Table – (Chemtex, Tuftex, Cooltex, Protex, Webtex, Visitex II, Sanitex)								
Jacket	S	M	L	XL	2XL	3XL	4XL	5XL
Back Length	29"	30"	31"	31"	32"	32"	33"	33"
Chest	46"	50"	54"	58"	62"	66"	70"	72"
Sleeve	33"	34"	34.5"	35.5"	36"	36.5"	37"	37.5"
Bib Overall								
Full Length	48.5"	50"	52.5"	54"	56.5"	57.5"	58"	59"
Back Length	40.5"	42"	43.5"	45"	46.5"	47.5"	48"	49"
Inseam	28"	29"	30"	31"	32"	32"	33"	33"
Waist	42"	46"	50"	54"	58"	62"	66"	72"
Waist Pants								
Waist	42"	46"	50"	54"	58"	62"	66"	72"
Product Measurement Table – (Sitex, Economy, Budget, Thrifty)								
Jacket	S	M	L	XL	2X	3X	4x	5x
Back Length	29"	30"	31"	31"	32"	32"	33"	34"
Chest	46"	50"	54"	58"	62"	66"	70"	68"
Sleeve	33"	34"	34.5"	35.5"	36"	36.5"	37"	35.5"
Bib Overall								
Full Length	48"	50"	52"	54"	56"	57"	58"	57.5"
Outseam	40.5"	42"	43.5"	45"	46.5"	47.5"	48"	47.5"
Inseam	28"	29"	30"	31"	32"	32"	33"	31"
Waist	42"	46"	50"	54"	58"	62"	66"	63"
Waist Pants								
Waist	40"	44"	47"	54"	58"	62"	66"	60"

25

Steeltex

Strong as steel waterproof protection

75532 - Jacket with Hood Snaps (Sizes SM - 5X)

75534 - Jacket with Attached Hood (Sizes SM - 5X)

75550 - Bib Overall - Plain Front (Sizes SM - 5X)

75552 - Bib Overall - Fly Front (Sizes SM - 5X)

75560 - Hood (One size)

Material: Polyurethane on 210D Nylon – .27mm thickness
Available in: (one size)

Features & Benefits:

- 100% waterproof protection that provides additional protection from moderate chemical exposures
- Generous sizing for a comfortable fit
- Oversized storm flap for added protection in even the most active jobs
- Super-duty, tight fit snaps for a secure fit
- Waist take up snaps to tailor the bib overall for a perfect fit
- Heavy duty suspenders

Steeltex was designed for and is suitable for use in food processing and general industrial applications. It provides complete waterproof protection for the wearer that can easily be cleaned for repeated use.



**The
World
Leader in
Personal
Protection**

Chemtex

Level C protective clothing for protection from a variety of chemical applications

- #71020 Coverall with attached hood (S-5X)
- #71022 Coverall with attached hood and inner cuffs (S-5X)
- #71032 Jacket with hood snaps (S-5X)
- #71034 Jacket with attached hood (S-5X)
- #71050 Bib Overall, plain front (S-5X)
- #71060 Hood (One size)

Material: PVC on Nylon Polyester - .42mm thickness
Available in: Green

See chemical degradation chart for additional information on specific chemical resistance

Features & Benefits:

- Heavy duty PVC on high count nylon polyester
- Complies with ASTM D6413 for flame resistance
- Reinforced knees, elbows, and crotch area to prevent splitting
- Heavy duty elastic adjustable suspender with deluxe suspender clip
- Adjustable waist snaps for the perfect fit
- Jacket with storm flap front
- Heavy duty zipper
- Cord locks on hood strings
- Ankle and cuff take-up snaps for a snug/tapered fit
- Clear I.D. badge pocket on chest

This is a "Level C" garment not to be used in "Level A" environments



26

Sanitex

Protection for all your sanitation needs



- #71220 Coverall with attached hood (S-5X)
- #71232 Jacket with hood snaps (S-5X)
- #71250 Bib Overall, plain front (S-5X)
- #71260 Hood (One Size)

Material: PVC on Nylon Polyester - .35mm thickness
Available in: Green

Features & Benefits:

- Specially designed for use in chemical plants, refineries, food processing, and environmental clean-up
- Reinforced knees, elbows, and crotch area to prevent splitting
- Heavy duty elastic adjustable suspender with deluxe suspender clip
- Adjustable waist snaps for the perfect fit
- Jacket with storm flap front
- Heavy duty zipper
- Cord locks on hood strings
- Ankle and cuff take-up snaps for a snug/tapered fit
- Clear I.D. badge pocket on chest
- Complies with ASTM D6413 for flame resistance

Order
Toll Free
1-800-
365-2282


ONGUARD
INDUSTRIES

Visitex II

High visibility protection clothing for inclement weather

#72115 3 Piece Suit (S-4X)

#72135 Jacket with detachable hood snaps (S-4X)

#72152 Bib Overall, snap fly front (S-4X)

#72160 Hood (One size)

Material: High visibility PVC on Polyester - .35mm material thickness
Available in: High Visibility Yellow

Features & Benefits:

- High visibility PVC on polyester
- Dual entry (top and side) pockets on jackets
- 2" high reflective stripes
- Heavy duty elastic adjustable suspender with deluxe suspender clip
- Jacket with storm flap front
- Adjustable waist snaps for the perfect fit
- Ankle and cuff take-up snaps for a snug/tapered fit
- Cord locks on hood strings
- Cape back jacket with vents
- Complies with ASTM D6413 for flame resistance



27

Neotex

Excellent tear and puncture resistance for industrial and mining applications



#74023 3 Piece Suit (S-4X)

#74032 Jacket with hood snaps (S-4X)

#74050 Bib Overall, plain front (S-4X)

#74060 Hood (One size)

Material: Neoprene on nylon - .33mm material thickness
Available in: Yellow

See chemical degradation chart for additional information on specific chemical resistance

Features & Benefits:

- Constructed of heavy duty neoprene on nylon
- Reinforced crotch area to prevent splitting
- Heavy duty elastic adjustable suspender with deluxe suspender clip
- Jacket with storm flap front
- Adjustable waist snaps for the perfect fit
- Ankle and cuff take-up snaps for a snug/tapered fit
- Cord locks on hood strings
- Underarm vents to keep you cool
- Two front snap pockets on jackets
- Complies with ASTM D6413 for flame resistance



**The
World
Leader in
Personal
Protection**

Duratex

Industrial strength, tear resistant PVC on polyester for the ultimate in heavy duty, durable, protection

#70032 Jacket with detachable hood (S-5XL)

#70050 Bib Overall (S-5XL)

Material: PVC on high tensile polyester, .40mm material thickness.

Available in dark green.

Features & Benefits:

- Designed specifically to meet the rigorous demands of processing facilities (from processing line requirements to maintenance operations)
- Constructed of heavy duty .40mm high density PVC on polyester to provide high abrasion resistance
- Deep forest green color with textured finish that is easy to clean and decontaminate
- Jacket with detachable hood has double elbows for extra strength
- Extra wide storm flap on jacket for splash/spray protection
- Bib overall with extended double knee patches for extra strength
- Take-up snaps at waist and ankle for customized fit
- Stitched and sealed seams for added strength
- Engineered bib overall to provide a roomier fit in the leg, thigh and crotch area



28

Polytex

Lightweight protection with excellent tear and resistance for a variety of uses



#75032 Jacket with hood snaps (S-4X)

#75052 Bib Overall, snap fly front (S-4X)

#75065 Hood (One size)

Material: Nylon on polyurethane – 148 gm/sq. meter (210 denier)
material thickness

Available in: Yellow

Features & Benefits:

- Lightweight nylon on polyurethane
- Reinforced crotch area to prevent splitting
- Heavy duty elastic adjustable suspender with deluxe suspender clip
- Jacket with storm flap front
- Adjustable waist snaps for the perfect fit
- Ankle and cuff take-up snaps for a snug/tapered fit
- Two front snap pockets on jackets

Order
Toll Free
1-800-
365-2282



Webtex

Heavy duty ribbed material designed for use in warm or cool climates

- #76017 3 Piece Yellow Suit (S-3X)
- #76018 3 Piece Olive Green Suit (S-3X)
- #76032 Jacket with hood snaps (S-3X)
- #76034 Jacket with attached hood (S-3X)
- #76042 48" Coat with hood snaps (S-3X)
- #76050 Bib Overall, plain front (S-4X)
- #76052 Bib Overall, snap fly front (S-4X)
- #76060 Hood (One size)

Material: Ribbed PVC on non-woven polyester - .65mm material thickness
Available in: Yellow and Olive Green

Features & Benefits:

- Heavy duty ribbed PVC on non-woven polyester
- Reinforced crotch area to prevent splitting
- Heavy duty adjustable suspender
- Adjustable waist snaps for the perfect fit
- Ankle and cuff take-up snaps for a snug/tapered fit
- Jacket with storm flap front
- Two front snap pockets on jackets
- Underarm vents to keep you cool



29

Tuftex

Lightweight, high performance material with excellent tear and resistance



- #78017 3 Piece Suit (S-4X)
- #78018 2 Piece Suit (S-4X)
- #78032 Jacket with hood snaps (S-5X)
- #78034 Jacket with attached hood (S-5X)
- #78040 48" Coat with hood snaps (S-5X)
- #78050 Bib Overall, plain front (S-5X)
- #78052 Bib Overall, snap fly front (S-5X)
- #78060 Hood (One size)

Material: PVC/Nylon/PVC Scrim - .30mm material thickness
Available in: Yellow

Features & Benefits:

- Lightweight but very tear resistant
- Complies with ASTM D6413 for flame resistance
- Heavy duty adjustable suspender
- Adjustable waist snaps for the perfect fit
- Ankle and cuff take-up snaps for a snug/tapered fit
- Jacket with storm flap front
- Two front snap pockets on jackets
- Cape back jacket with vents
- Underarm vents to keep you cool



*The
World
Leader in
Personal
Protection*

Protex

Heavy-duty protection for every industry

#79034 Jacket with attached hood (S-3X)

#79040 48" Coat with hood snaps (S-3X)

#79050 Bib Overall, plain front (S-3X)

#79052 Bib Overall, snap fly front (S-3X)

#79054 Elastic Waist Trousers (S-3X)

#79060 Hood (One Size)

Material: PVC on Non-Woven Polyester - .30mm material thickness
Available in: Yellow

See chemical degradation chart for additional information on specific chemical resistance

Features & Benefits:

- Constructed of heavy-duty PVC on nylon/polyester
- Reinforced crotch area to prevent splitting
- Heavy duty elastic adjustable suspender
- Adjustable waist snaps for the perfect fit
- Ankle and cuff take-up snaps for a snug/tapered fit
- Jacket with storm flap front
- Two front snap pockets on jackets



30

Cooltex

Heavy duty protection that keeps you cool and dry



#77032 Jacket with hood snaps (S-3X)

#77034 Jacket with attached hood (S-3X)

#77050 Bib Overall, plain front (S-3X)

#76060 Hood (One Size)

Material: Heavy duty PVC on Non-Woven Polyester - .40mm material thickness
Available in: Yellow

Features & Benefits:

- High quality textured PVC on non-woven polyester
- Heavy duty adjustable suspender
- Adjustable waist snaps for the perfect fit
- Ankle and cuff take-up snaps for a snug/tapered fit
- Jacket with storm flap front
- Two front snap pockets on jackets
- Underarm vents to keep you cool

**Order
Toll Free
1-800-
365-2282**



Sitex

Versatile industrial grade protection for all-purpose use

#76515 3 piece Suit (S-7X)

#76522 2 Piece Suit with elastic waist trousers (S-5X)

#76534 Jacket with attached hood (S-5X)

#76535 Jacket with detachable hood (S-4X)

#76542 48" Coat with detachable hood (S-5X)

#76552 Bib Overall, snap fly front (S-5X)

#76554 Elastic Waist Trousers (S-5X)

#76599 3 Piece Blue Suit (S-4X)

#76600 3 Piece Green Suit (S-4X)

#76601 3 Piece Orange Suit (S-4X)

Material: PVC on Polyester - .35mm material thickness – Corduroy Collar

Available in: Yellow, Blue*, Hunter Green*, Bright Orange*

Features & Benefits:

- High quality PVC on polyester • Heavy duty adjustable suspender
- Adjustable waist snaps for the perfect fit
- Ankle and cuff take-up snaps for a snug/tapered fit
- Jacket with storm flap front • Two front snap pockets on jacket
- Cape back jacket with vents
- Underarm vents to keep you cool



31

Economy

Superior value and performance for industrial and consumer use – 2-ply construction provides extra strength



#74515 3 Piece Suit (S-4X)

#74521 2 Piece Suit (S-4X)

#74534 Jacket with attached hood (S-3X)

#74542 48" Coat with Hood Snaps (S-3X)

#74552 Bib Overall, Snap Fly Front (S-3X)

Material: 2 Ply PVC - .25mm material thickness

Available in: Yellow with silver lining

Features & Benefits:

- 2-ply PVC construction
- Heavy duty adjustable suspender
- Adjustable waist snaps for the perfect fit
- Ankle and cuff take-up snaps for a snug/tapered fit
- Jacket with storm flap front
- Two front flap pockets on jackets
- Cape back jacket with vents
- Underarm vents to keep you cool



*The
World
Leader in
Personal
Protection*

Budget

Economical protection for lightweight applications

#73515 3 Piece Suit (S-4X)

#73535 Jacket with detachable hood (S-3X)

#73552 Bib Overall, snap fly front (S-3X)

Material: 2-Ply PVC -
.20mm material thickness

Available in: Yellow

Features & Benefits:

- Reinforced and adjustable suspender
- Adjustable waist snaps for the perfect fit
- Ankle and cuff take-up snaps for a snug/tapered fit
- Jacket with storm flap front
- Two front flap pockets on jackets
- Underarm vents to keep you cool



Thrifty

Disposable, light duty waterproof protection

#72515 3 Piece Suit (S-4X)

#72531 2 Piece Suit (S-4X)

Material: Single Ply PVC -
.10mm material thickness

Available in: Yellow

Features & Benefits:

- Ankle and cuff take-up snaps for a snug/tapered fit
- Reinforced crotch area to prevent splitting
- Cord locks on hood strings

32

Poncho

Versatile waterproof protection from the workplace to the stadium

#71578 .10mm PVC (Yellow)
(One size)

#71577 .10mm PVC (Orange)
(One size)

Material: Single-ply PVC -
.10mm material thickness

Available in: Yellow and Orange

Features & Benefits:

- One size fits all
- Available in two colors
- Convenient waterproof protection



Order
Toll Free
1-800-
365-2282


ONGUARD
INDUSTRIES

LEADER IN PROTECTIVE FOOTWEAR AND APPAREL

1850 Clark Road Havre de Grace, Maryland 21078

Phone: 410.272.2000

Fax: 410.272.3346

Toll free: 800.365.2282

Toll free fax: 800.304.2282

E-mail: service@onguardindustries.com

www.onguardindustries.com

